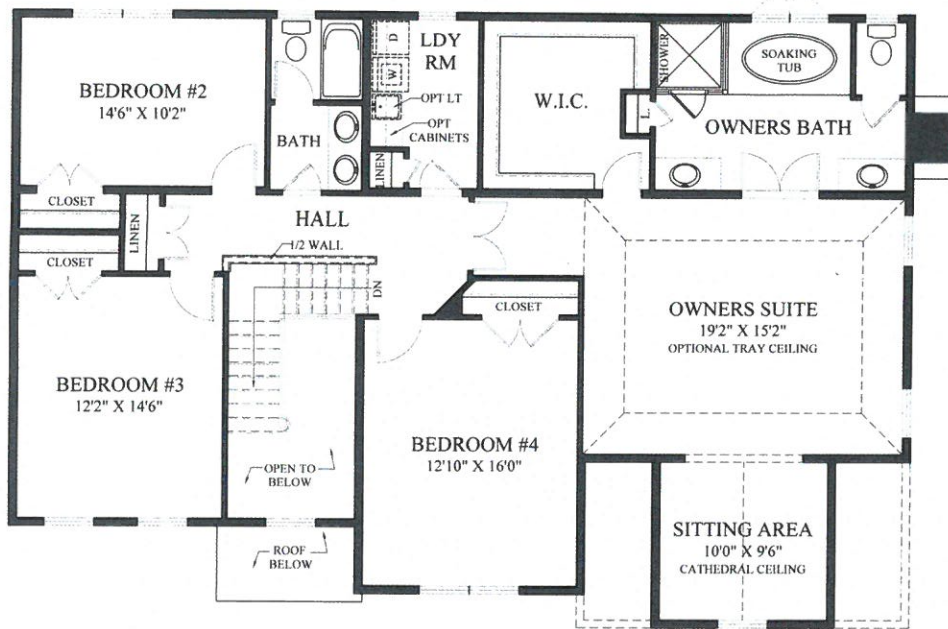


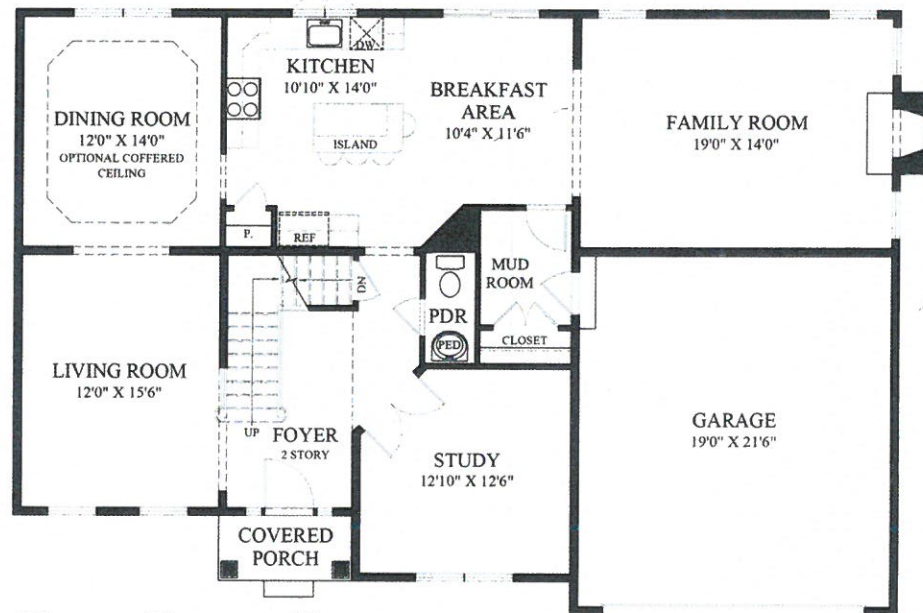
# THE SHIPLEY



ROOM SIZES ARE SUBJECT TO FIELD VARIATIONS.  
CONTRACT TAKES PRECEDENCE OVER ARTWORK.  
CONTENTS SUBJECT TO ERRORS AND OMISSIONS.



SECOND FLOOR PLAN



FIRST FLOOR PLAN

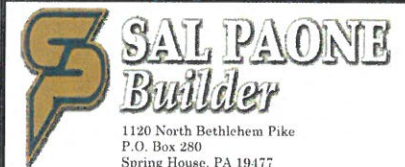
ROOM SIZES ARE SUBJECT TO FIELD VARIATIONS.  
 CONTRACT TAKES PRECEDENCE OVER ARTWORK.  
 CONTENTS SUBJECT TO ERRORS AND OMISSIONS.

## THE SHIPLEY



### PLAN FEATURES

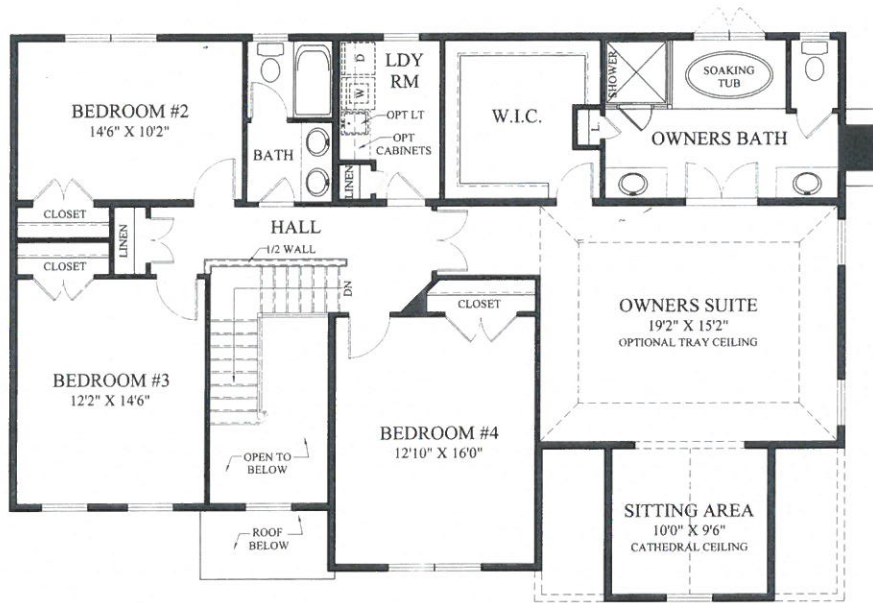
- TWO STORY ENTRY FOYER.
- FAMILY ROOM WITH FIREPLACE.
- FOUR BEDROOMS.
- TWO AND ONE-HALF BATHS.
- OWNERS SUITE WITH ELEGANT OWNERS BATH AND LARGE WALK IN CLOSET.
- CONVENIENT SECOND FLOOR LAUNDRY ROOM.
- TWO CAR GARAGE.



1120 North Bethlehem Pike  
 P.O. Box 280  
 Spring House, PA 19477  
 Phone: 215-542-1331 \*Fax: 215-542-2418  
 WWW.SALPAONEBUILDER.COM



67 Byberry Road, Hatboro, PA 19040  
 Phone: 215-674-5950 \*Fax: 215-674-5952  
 WWW.LUCEARCHITECTS.COM



SECOND FLOOR PLAN



PART'L SECOND FLOOR PLAN  
AT BEDROOM #4 WITH OPT.  
PRIVATE BATH

**SAL PAONE**  
BUILDER

ROOM SIZES ARE APPROXIMATE AND SUBJECT TO FIELD VARIATIONS.  
CONTRACT TAKES PRECEDENCE OVER ARTWORK. CONTENTS SUBJECT  
TO ERRORS AND OMISSIONS. (c) S. PAONE, INC 2014

*The Shipley*

**LUCE**  
architects

Christopher J. Luce, AIA  
PA RA015179  
NJ 21A0101673100  
67 Dyberry Road, Hatboro, PA, 19040  
Phone: 215-674-5950 • Fax: 215-674-5952  
WWW.LUCEARCHITECTS.COM  
8/1/14 (REV 9/2/14)